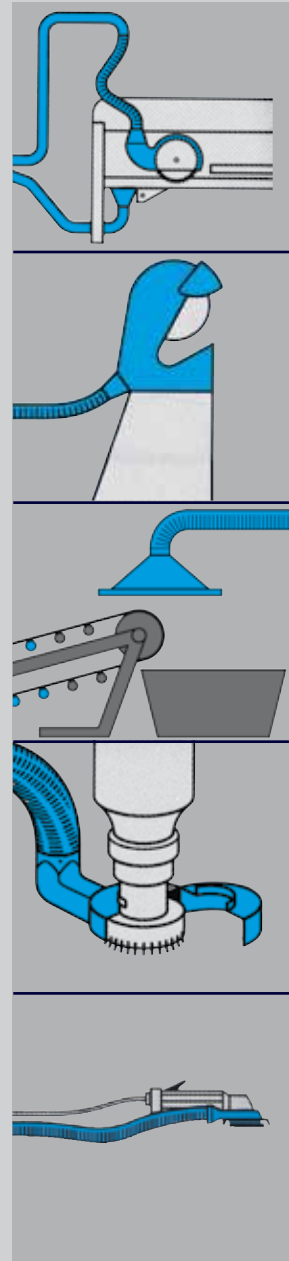




INDUSTRIAL VACUUM SYSTEMS

Product Group
Central Vacuum Systems

monobloc E



wieland lufttechnik
Wetterkreuz 12
D-91058 Erlangen
Germany
Phone +49 9131 60 67-0
Fax +49 9131 60 44 01
info@wieland-luft.com
www.wieland-luft.com

Compact dust extraction unit - Air flow 1.500 to 3.000 m³/h
3-phase flange motors 1.5 to 5.5 kW, rated for continuous performance

Standard Equipment

100-litre collection container.
Compressed air filter cleaning



Inlet-Ø 180 mm



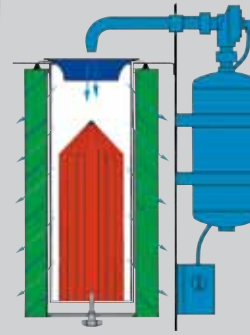
Standard Equipment

Filter cleaning by pressing push buttons (red)



Optional Equipment

Continuous filter cleaning every 90 sec. or at a defined filter resistance



Advanced Jet Filter Cleaning System

A venturi nozzle (blue) reinforces the compressed air impulse. An air guiding cylinder (red) forces the air jet directly through the filter material (green), cleaning it thoroughly.



The filter is certified according to EN 60335-2-69, classification M, for hazardous and highly hazardous dust. It is suitable for dust extraction in industries such as chemical, pharmaceutical and metal industry for the separation of coarse and fine dust, with a temperature of up to 80°C.

Optional equipment extends the range of applications

Discharge cone



Cone fits the 50-litre collection container for PE-bags.

Hazardous dust is discharged dust-reduced in shaped PE-bags.

Pre-Separator/ Spark Arrestor



For large quantities of suction material, a high percentage of fine dust or fibres (air flow up to 3.000 m³/h).

Spark Arrestor



Protects filter from glowing particles during grinding (air flow up to 600 m³/h).

Shaped PE-bags



fitting exactly inside of the 50-litre collection container.

Extraction Arm

Attaches to the monobloc unit to the wall or to work benches.



monobloc E, dust extraction of a filling unit in a mixing installation

More performant dust extraction units, model series monobloc MB and FiltroJet provide still more efficiency for dust separation and are available for higher airflows.

Technical data	Unit	monobloc E 2000/1.5/10	monobloc E 2000/1.5/20	monobloc E 2200/4.0/10	monobloc E 2200/4.0/20	monobloc E 3000/3.0/20	monobloc E 3000/5.5/20
Driving power	kW	1.5	1.5	4.0	4.0	3.0	5.5
Voltage	V / Hz	400/50	400/50	400/50	400/50	400/50	400/50
Minimum fuse (400 Volt)	Amp.	10	10	16	16	16	25
Air flow at vacuum	m ³ /h mbar	1500 19	1500 19	1500 36	1500 36	2400 23	2400 40
Airflow max.	m ³ /h	2000	2000	2200	2200	3000	3000
Suction inlet-Ø	mm	180	180	180	180	180	180
Filter surface	cm ²	10000	20000	10000	20000	20000	20000
Dimension approx. (LxWxH)	mm	780x870x1970	780x870x1970	780x870x1970	780x870x1970	780x870x1970	780x870x2100
Weight approx.	kg	245	255	265	275	270	275
Sound level reflection free DIN 45635 (without silencer)	dB(A)	78	78	79	79	80	80



INDUSTRIAL VACUUM SYSTEMS

monobloc MB-RD

Heavy-duty dust extractor for

- Machining centres
- Transfer points of belt conveyors
- Air-borne dust from production processes

Suitable for the separation of dust hazardous to health

Atex explosion protection



wieland lufttechnik

Wetterkreuz 12
91058 Erlangen
Germany

Phone +49 9131 60 67-0

Fax +49 9131 60 44 01

info@wieland-luft.com

www.wieland-luft.com



Dust extraction units with compressed air reverse jet filter cleaning device

Continuous extraction of machining dusts, e.g. grinding dust, turnings and plastic chips, and of airborne dusts, e.g. from material discharge stations and transfer points

Dust class M (EN 60335-2-69)

Standard equipment of model series MB-RD

- Stainless steel filter housing, cone, support legs and collection container in standard steel, colour grey RAL 7001
- Diffuser at the suction inlet for improved pre-separation
- Cartridge filter, continuous compressed air reverse jet filter cleaning
- Polyester filter cartridges, calendered surface, dust class M
- Electronic sequence control
- Inspection opening in the filter housing
- Collection container, 50 litres

Technical data filter

	Unit	MB-RD 24 P	MB-RD 44 P
Filter surface	m ²	24	44
Collection container	litres	50	50
Vacuum resistance	mbar	100	50
Protection class	IP	54	54
Compressed air pressure	bar	5-6	5-6
Compressed air consumption	Nm ³ /h	8	10
Weight approx.	kg	286	322

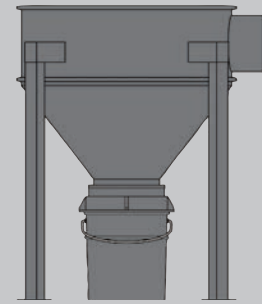
Technical data blower

	Unit	G1800	G2800	G3500	G4000	G6000
Power	kW	1.5	2.2	3.0	4.0	5.5
Voltage	V / Hz	400/50	400/50	400/50	400/50	400/50
Air flow at (vacuum)	m ³ /h	1800	2800	3500	4000	6000
	mbar	19	22	18	24	18
Max. air flow.	m ³ /h	2600	3400	3900	4500	6400
Protection class	IP	54	54	54	54	54
Weight approx.	kg	52	73	81	99	112

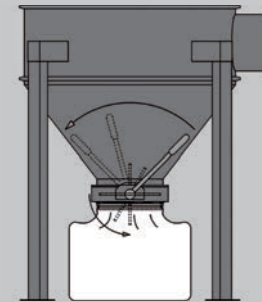
Choice of material collection systems:

Standard equipment:

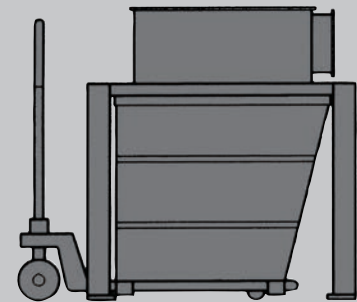
Collection container, 50 litres



Collection cone with discharge flap and fixing device for PE bag



Collection container 500 or 1000 litres



High-quality filter system with continuous compressed air reverse jet filter cleaning device



Stainless steel filter housing



Widely folded filter cartridges prevent jamming of suction material in the folds

0417-428